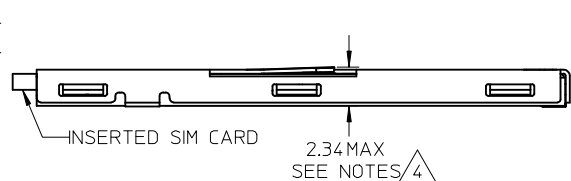
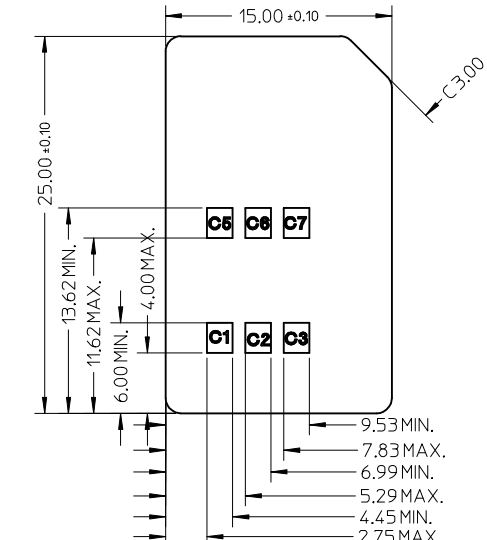


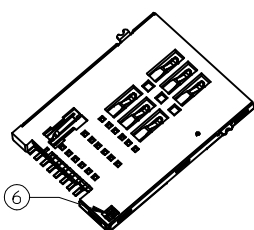
(LOCATION OF CARD PUSHED) 1.00 REF.
 (LOCATION OF CARD LOCKED) 2.00 REF.
 (LOCATION OF CARD EJECTED) 6.04 REF.



SECTION Z-Z

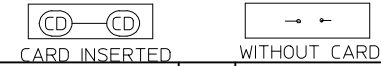


APPLICABLE CARD SIZE
 THICKNESS: 0.76±/-0.08

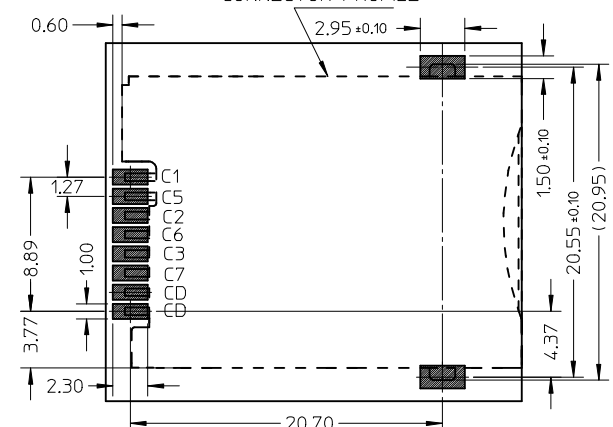
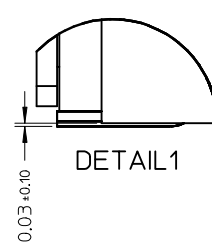
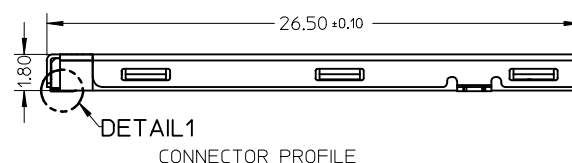


NOTES

1. FINISH
 - 1-1 TERMINAL :
 - 50~200μ NICKEL UNDER PLATED
 - 15μ MIN GOLD PLATING ON CONTACT AREA
 - 3μ MIN GOLD FLASH ON SOLDERING AREA
 - 1-2 SHELL :
 - 50~200μ NICKEL UNDER PLATED
 - 3μ MIN GOLD FLASH ON SOLDERING AREA
 - 1-3 DETECT PIN :
 - 50~200μ NICKEL UNDER PLATED
 - 3μ MIN GOLD PLATING ON CONTACT AREA
 - 3μ MIN GOLD FLASH ON SOLDERING AREA
2. DETECT SWITCH: INSERT CARD=ON (NORMAL=OPEN)
3. I.E., TERMINAL TIP WILL SINK INTO HOUSING.
4. SPRING RISE UP DURING PUSH-PUSH PERIOD
5. PRODUCT COMPLIANT TO ROHS DIRECTIVE 2011/65/EU AND ELV DIRECTIVE 2000/53/EC
6. SOLDER TAIL(10X) COPLANARITY 0.10MM MAX (BEFORE REFLOW)
7. PRODUCT SPECIFICATION: PS-47553-201
8. PACKAGE DRAWING: PK-47553-001



NO.	DESCRIPTION	Q'TY	MATERIAL
1	HOUSING	1	HIGH TEMPERATURE THERMOPLASTIC
2	TERMINAL	6	COPPER ALLOY
3	DETECT PIN LOWER	1	COPPER ALLOY
4	DETECT PIN UPPER	1	COPPER ALLOY
5	SHELL	1	STAINLESS STEEL
6	COIL SPRING	1	PIANO WIRE
7	HEART CAM	1	HIGH TEMPERATURE THERMOPLASTIC
8	CAM PIN	1	STAINLESS STEEL



RECOMMENDED PCB LAYOUT
 TOLERANCE +/-0.05MM

COPLANARITY ADDED EC NO: S2013-0560 DRW: NEANG 2013/02/15 CHKD: JIAN02 2013/03/25 APPR: KHLIM 2013/03/25	QUALITY SYMBOLS F=0 F=0 F=0	GENERAL TOLERANCES (UNLESS SPECIFIED)		DIMENSION STYLE MM ONLY		SCALE NTS	DESIGN UNITS METRIC	THIRD ANGLE PROJECTION			
		4 PLACES ± --- ± --- 3 PLACES ± --- ± --- 2 PLACES ± 0.15 ± --- 1 PLACE ± --- ± ---	mm INCH	DRAWN BY LHSHEEN	DATE 2006/09/07	TITLE PUSH PUSH 6 PINS SIM CONN. WITH DETECT PIN SALES DRAWING					
		ANGULAR ± ---°		CHECKED BY XUXIANG	DATE 2007/04/16	MOLEX INCORPORATED					
		DRAFT WHERE APPLICABLE MUST REMAIN WITHIN DIMENSIONS		APPROVED BY JENNYCHEN	DATE 2007/04/16	MATERIAL NO. 475530001	DOCUMENT NO. SD-47553-001	SHEET NO. 1 OF 1			

THIS DRAWING CONTAINS INFORMATION THAT IS PROPRIETARY TO MOLEX INCORPORATED AND SHOULD NOT BE USED WITHOUT WRITTEN PERMISSION